

Langkah Konfigurasi FTP Dengan Jaringan Internet :

1. Untuk setting ftp berada di **Setup dan Alat Bantu>Setup Program > Pilih Opsi Data POS dan Back Office Berbeda (Dipisahkan)> cek list Opsi Menggunakan Sistem Sinkronisasi Melalui FTP Server> Klik Setup FTP**
2. Lalu akan tampil jendela dibawah ini :

The screenshot shows a software window titled "Setting" with a sidebar on the left containing menu items: "Setelan Umum", "Transaksi Penjualan", "Printer, Drawer dan Display", "Kustomisasi Nama Field", and "Setelan Pengguna". The main content area is split into two sections. The top section, "FTP Server", includes input fields for "Host Name", "Host Port", "User Name", "Password", "Upload Remote Path", and "Upload Local Path", along with a "Case In Sensitive" checkbox. The bottom section, "Download From Server", features a table with columns: "Branch Name", "Dept.", "Download To Local Path", and "Download From Remote Path". At the bottom of the window, there are "Batal" and "Rekam" buttons, and a version string "Zahir POS Ver. 5.1 build 11".

- Host name : Diisikan alamat host FTP internet misalnya <ftp.zahiraccounting.com>
- Host port : port FTP menggunakan port 21
- Username : Diisikan username login FTP
- Password : Diisikan password login FTP
- Upload Remote Path : Diisikan folder FTP internet
- Upload Local Path : Diisikan folder local temporary yang ada di komputer untuk export.

Setting Download FTP

- Branch Name : Diisikan nama departemen back office
- Dept : Diisikan nomor departemen back office
- Download to Local Path : Diisikan folder local temporary yang ada di komputer untuk import
- Download from Remote Path : Diisikan folder FTP internet

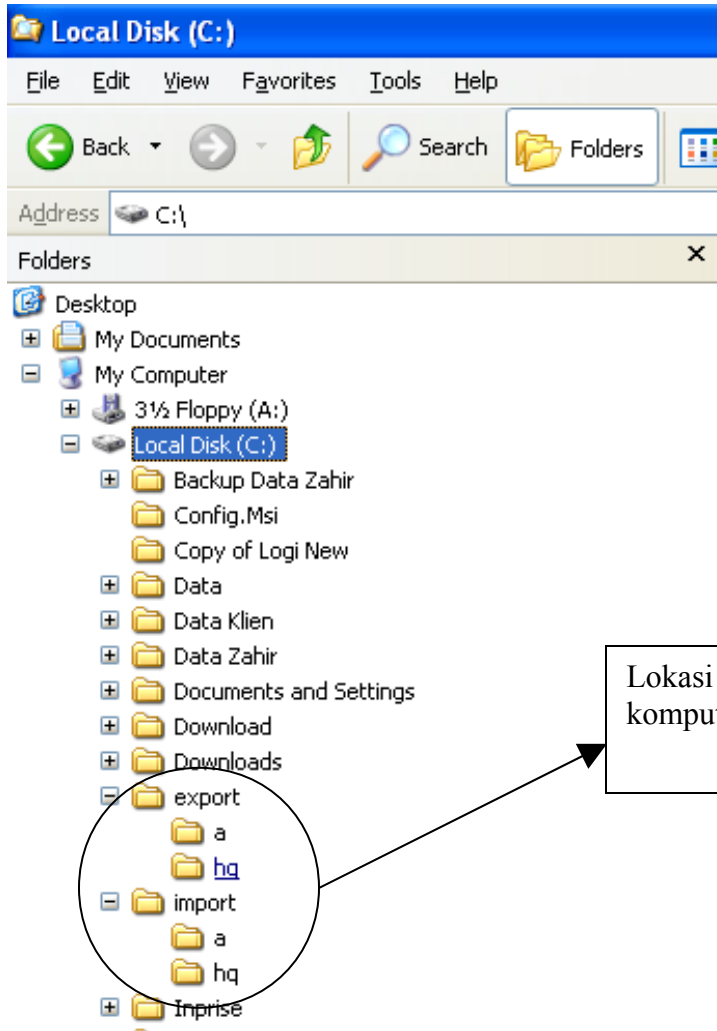
Contoh Konfigurasi FTP Internet :

1. Setting di local komputer yang akan di lakukan Proses Sinkronisasi

Misalkan :

- Upload Local Path : c:\export\hq

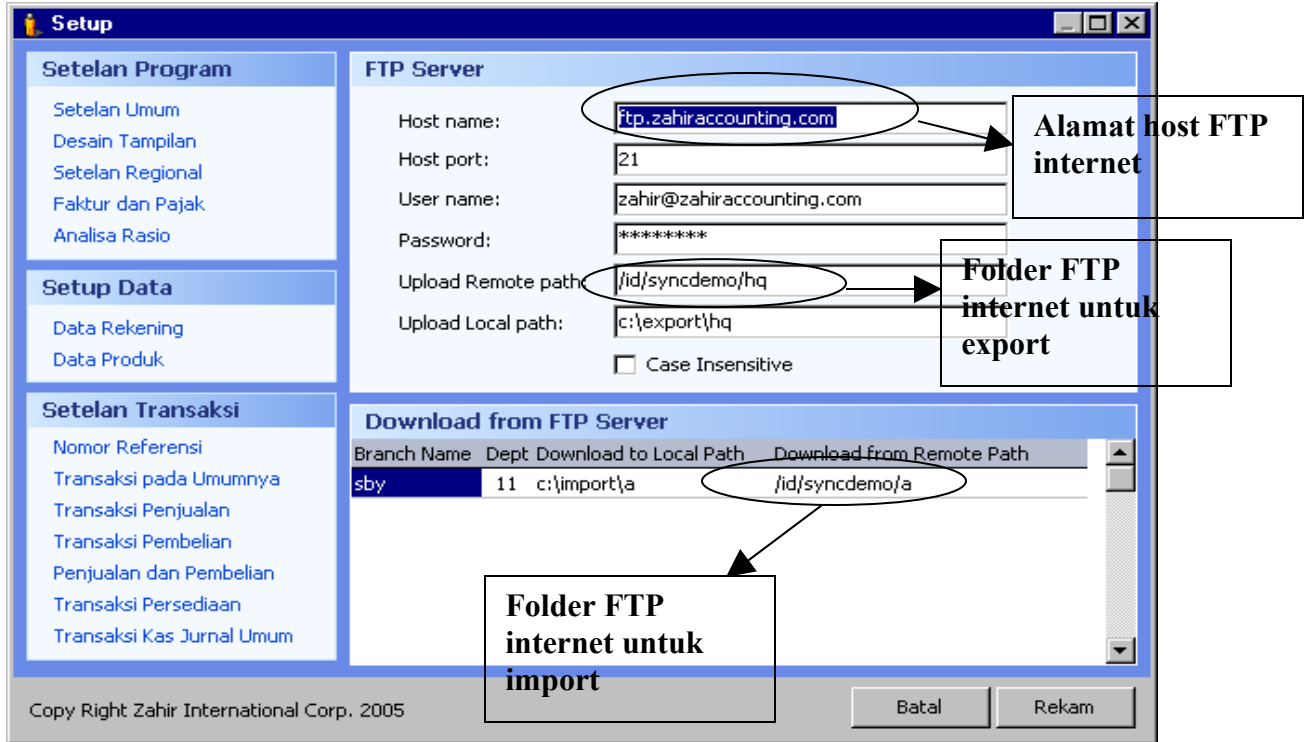
- Download from Remote Path : c:\import\a



Lokasi local path di komputer sinkronisasi

2. Gambar di bawah ini setting FTP di zahir yang sudah di setting.

Konfigurasi Di Back Office :



Konfigurasi POS

Setting Upload FTP POS :

Hostname : ftp.zahiraccounting.com
Host port : 21
upload Remote Path : /id/syncdemo/a
upload local Path : c:\export\h

Setting Download FTP POS :

Branch Name : hq
dept : 0
Download to local path : c:\import\h
Download From Remote Path : /id/syncdemo/hq

Setting [Close]

Setup Program

- Setelan Umum
- Transaksi Penjualan
- Printer, Drawer dan Display
- Kustomisasi Nama Field
- Setelan Pengguna

FTP Server

Host Name : ftp.zahiraccounting.com

Host Port : 21

User Name : zahir@zahiraccounting.com

Password : *****

Upload Remote Path : /fd/synsdemo/a

Upload Local Path : c:\export\a

Case In Sensitive

Download From Server

Branch Name	Dept.	Download To Local Path	Download From Remote Path
hq	0	c:\import\hq	/fd/synsdemo/hq

Zahir POS Ver. 5.1 build 11

Batal Rekam